

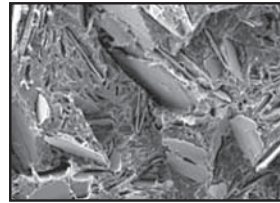
# Eastman G™ maleated polyolefins

## Superior coupling additives for mica reinforcement

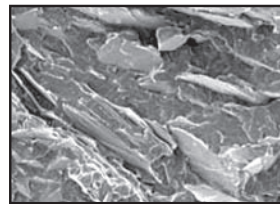
Eastman G™-3003 and Eastman G™-3015 polymers are maleic anhydride-grafted polypropylenes with a balance of functionality and molecular weight designed to couple fiber and mineral fillers to polypropylene. Evaluations at Eastman laboratories have shown that maleated polypropylenes with higher levels of maleic functionality (>1.2% maleic) are superior coupling additives for mica/PP composites.

Tests have further confirmed that *lower-cost, untreated mica* can be coupled to provide reinforcement properties equal to silane-treated mica. The higher acid number maleated couplers are effective at very low levels (1%–2% based on mica level).

Eastman G-3003 and Eastman G-3015 are available in 50 lb (22.7 kg) bags or 1,000 lb (453.6 kg) boxes. Bulk bag packaging or powder form is also available on a made-to-order basis.



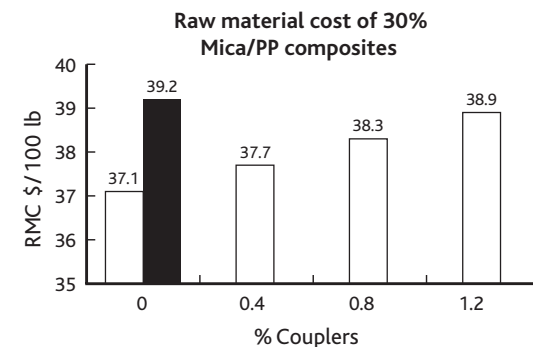
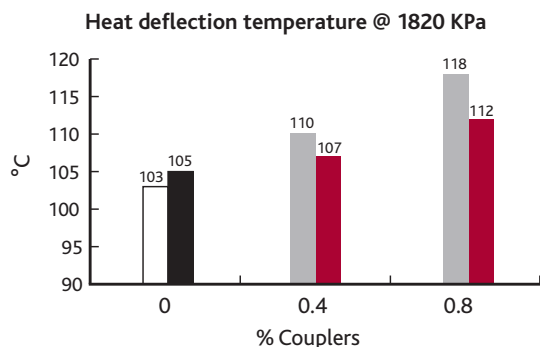
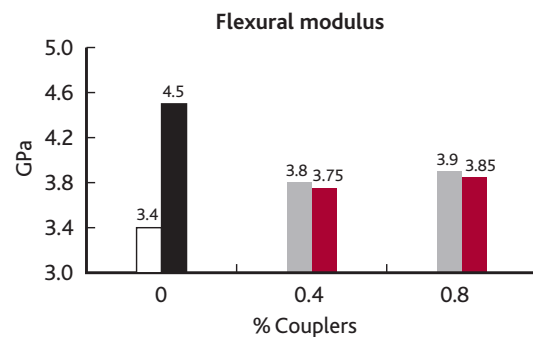
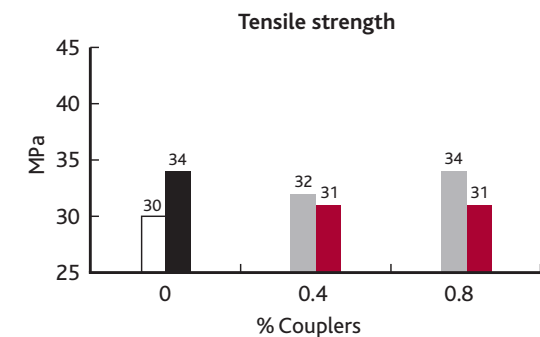
40% Mica/PP



40% Mica/PP/Eastman G

Eastman G™ polymers are products of Eastman Chemical Company and are protected under one or more of the following U.S. patents: 5,955,547; 6,046,279; 7,408,007; 7,683,134; and their foreign equivalents.

### Physical data for 40% mica/PP composites





**Eastman Chemical Company  
Corporate Headquarters**

P.O. Box 431  
Kingsport, TN 37662-5280 U.S.A.

Telephone:  
U.S.A. and Canada, 800-EASTMAN (800-327-8626)  
Other Locations, (1) 423-229-2000  
Fax: (1) 423-229-1193

**Eastman Chemical Latin America**

9155 South Dadeland Blvd.  
Suite 1116  
Miami, FL 33156 U.S.A.

Telephone: (1) 305-671-2800  
Fax: (1) 305-671-2805

**Eastman Chemical B.V.**

Fascinatio Boulevard 602-614  
2909 VA Capelle aan den IJssel  
The Netherlands

Telephone: (31) 10 2402 111  
Fax: (31) 10 2402 100

**Eastman (Shanghai) Chemical  
Commercial Company, Ltd. Jingan Branch**

1206, CITIC Square  
No. 1168 Nanjing Road (W)  
Shanghai 200041, P.R. China

Telephone: (86) 21 6120-8700  
Fax: (86) 21 5213-5255

**Eastman Chemical Japan Ltd.**

MetLife Aoyama Building 5F  
2-11-16 Minami Aoyama  
Minato-ku, Tokyo 107-0062 Japan

Telephone: (81) 3-3475-9510  
Fax: (81) 3-3475-9515

**Eastman Chemical Asia Pacific Pte. Ltd.**

#05-04 Winsland House  
3 Killiney Road  
Singapore 239519

Telephone: (65) 6831-3100  
Fax: (65) 6732-4930

[www.eastman.com](http://www.eastman.com)

Material Safety Data Sheets providing safety precautions that should be observed when handling and storing Eastman products are available online or by request. You should obtain and review the available material safety information before handling any of these products. If any materials mentioned are not Eastman products, appropriate industrial hygiene and other safety precautions recommended by their manufacturers should be observed.

*Neither Eastman Chemical Company nor its marketing affiliates shall be responsible for the use of this information or of any product, method, or apparatus mentioned, and you must make your own determination of its suitability and completeness for your own use, for the protection of the environment, and for the health and safety of your employees and purchasers of your products. NO WARRANTY IS MADE OF THE MERCHANTABILITY OR FITNESS OF ANY PRODUCT, AND NOTHING HEREIN WAIVES ANY OF THE SELLER'S CONDITIONS OF SALE.*

Eastman and Eastman G are trademarks of Eastman Chemical Company.

© Eastman Chemical Company, 2012.